



# CAPABILITY STATEMENT

AUSTRALIAN MADE AQUATIC ELEMENTS

ATLANTIS  
*liquid dynamics*

YOUR AQUATIC SPECIFICATION PARTNER





# CONTENTS

MEET OUR TEAM.....	05
WHAT WE DO.....	06
DESIGN PATHWAY.....	07
Case Study.....	08
NEXGEN SPLASHPARKS.....	11
Neighbourhood Series.....	12
Community Series.....	13
Destination Series.....	14
AQUATIC CONSTRUCTION.....	15
PROJECT CAPABILITY.....	16
H2Oasis @ Wet'n'Wild.....	17
Toogoolawah Splashpad.....	18
GCAC Aquatic Centre.....	18
Flagstone Water Play Park.....	19
Seaforth Esplanade.....	20
Burdekin Aquatic Centre.....	20
Logan Gardens Splash Park.....	21
Splashside.....	22
GETTING STARTED.....	23





**Atlantis Liquid Dynamics was born from the desire to reintroduce water elements to the public realm in endlessly innovative ways.**

By integrating stunning aesthetics with the latest sustainable technologies, water features have been elevated from functional or playable pieces to elements of stunning architecture. A sense of grand scale and opulence is conveyed, coupled with water's power to soothe and calm the senses in an immersive experience that is completely customisable to your space.

Designed and fabricated in Australia to suit the needs of our unique environment, Atlantis elements are fully supported by an expert Brisbane-based team for ultimate piece of mind.



**192**  
STANDARD ELEMENTS

**17**  
LOOKBOOK DESIGNS

**15**  
CUSTOM PROJECTS

# YOUR AQUATIC SPECIFICATION PARTNER

Integrating stunning aesthetics with the latest sustainable technologies, we work with you to create water features of stunning architecture, delivering experienced Australian design expertise and professional product support. What makes us different? Glad you asked!



## INNOVATIVE DESIGN

Designed for more than function and playability, Atlantis sculptural features engage people of all ages, cultures and abilities



## CONNECTION

Creating joy and connection through placemaking and the sensory experience of public water features in Australia and around the world



## QUALITY

We use the best quality materials to meet the demands of the Australian climate, while leaving as light a footprint as possible on the natural environment



## COLLABORATION

We work in partnership with landscape architects, hydraulic specialists and Councils across Australia



## SUSTAINABILITY

Designed to enthrall an audience without overusing resources through the innovative use of plantroom equipment and proprietary smart controllers



## AUSTRALIAN MADE

Supporting Australian expertise and innovation with quality materials and secured local supply chain



# MEET OUR TEAM



## MARCEL VERAART

MANAGING DIRECTOR

Engaged at every level of the business, Marcel leverages his 40 years' experience in the recreational construction industry to lead a team of hand-selected specialists, consistently delivering innovative design and fabrication methodologies.



## SHANE VARDY

AQUATICS SPECIALIST

With over 20 years' experience within the fabrication, construction and commercial design sectors, Shane has the knowledge and real-life skill set to bring clients' splashparks and public water features to life.



## NICHOLAS VERAART

PRODUCT DESIGN ENGINEER

Nicholas is a Qualified Mechanical Engineer with 8 years' experience in the design and construction of mechanical and structural systems across commercial construction and mining sectors.



## PETER KOCH

HEAD DESIGNER

Peter is driven to challenge industry status quo, creating award-winning projects throughout Australia with unique and innovative designs that deliver the client's vision and accomplish incredible community outcomes.



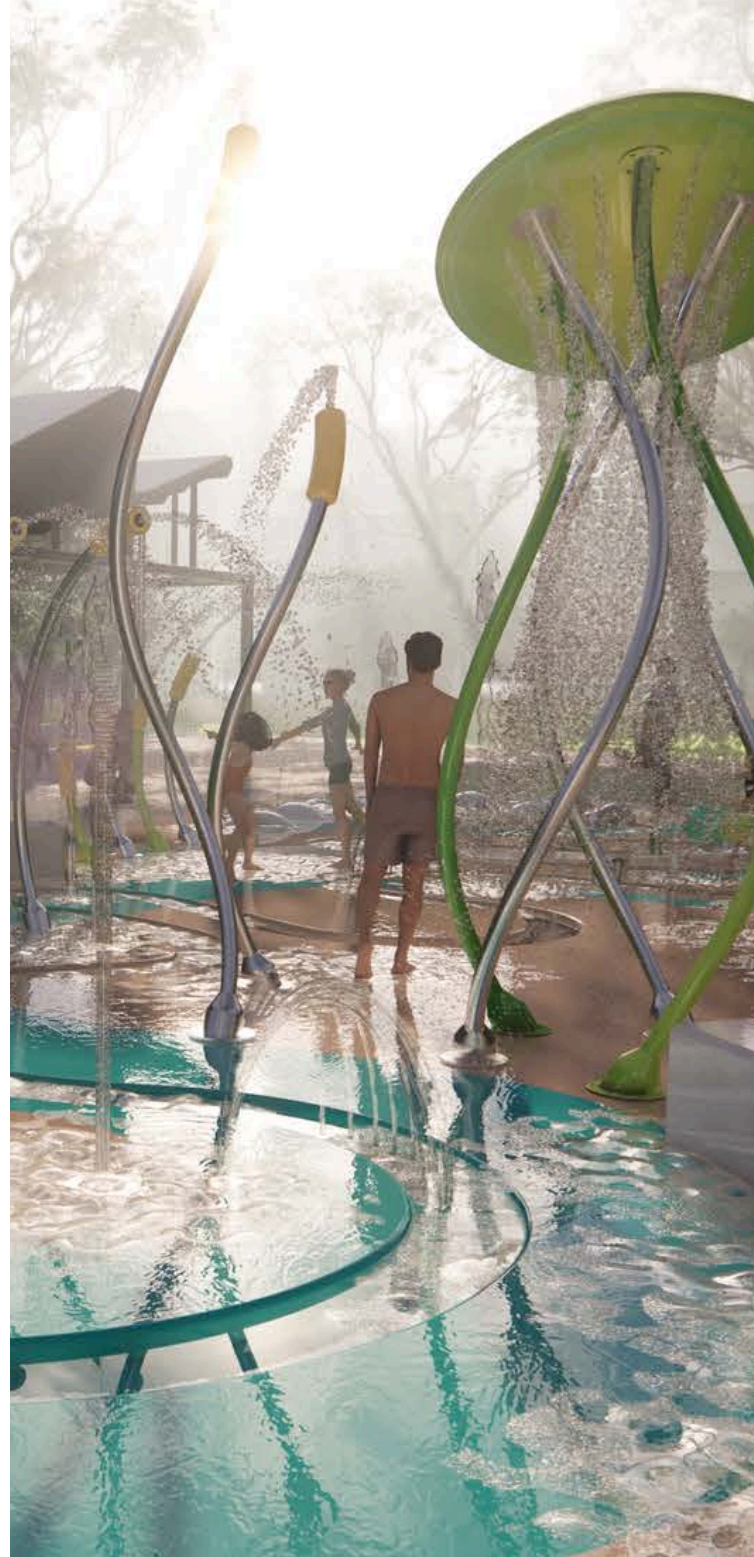
# WHAT WE DO

Working in partnership with landscape architects, hydraulic specialists and Councils across Australia, our team has extensive experience creating conceptual designs that answer your unique design brief while considering your site's parameters and project budget.

Together, we'll help you create and visualise your space design, from aquatic element placement and circulation considerations through to the inclusion of elements to enhance useability and access.

Our range of ready-to-specify aquatic elements ensures designers can obtain the aesthetics they crave, while achieving the quality and delivery timelines they need.

Using the best quality materials and a secured supply chain, delivery is available across Australia, supported by specification and installation documentation.



## DESIGN

Collaborate with our design team to learn more about the latest products and access expert design and sustainability advice

## SPECIFY

Select from our range of innovative aquatic sculptures and comprehensive design library to create something unique

## DELIVER

Knowing you are supported by a secured local supply chain and full suite of installation documentation



# DESIGN PATHWAY

We recognise that no two projects are the same. That's why we offer a flexible design pathway tailored to meet the vision, constraints and ambitions of every client. Whether you're seeking a ready-to-specify solution or a fully bespoke experience, our process is grounded in collaboration, craftsmanship and creativity. The following pages explore this journey in detail—through a recent case study that shows our design pathway in action.

1

## INSPIRATION

It all starts with a spark. Bring your own idea, browse our lookbook or fast-track with a ready-to-go NEXGen splashpark.

2

## DESIGN COLLABORATION

Together, we work with your team to refine the brief, resolve site constraints and shape a clear, practical design direction that meets the defined budget.

3

## BESPOKE DESIGN

For projects that need more than off-the-shelf, we craft bespoke designs that balance creativity with engineering, traffic flow and water performance from the outset.

4

## FINISHES

Select from a palette of premium materials and coatings designed for durability, safety and visual impact.

5

## SPECIFICATION

Build confidence with clear, comprehensive documentation to support seamless design, approval and procurement.

6

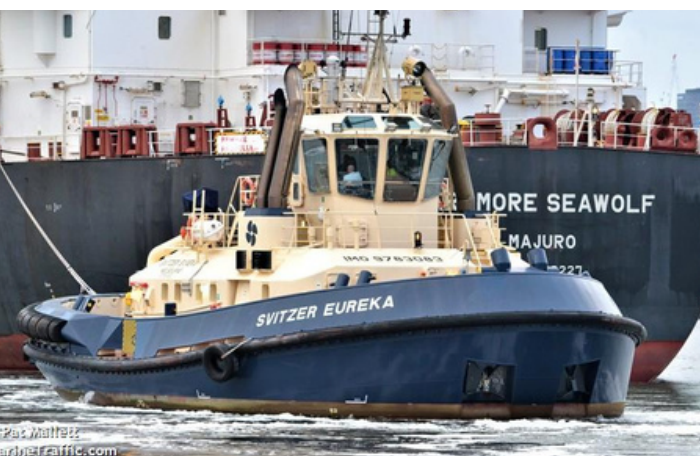
## CONSTRUCTION

Ensure smooth delivery with local fabrication, coordinated logistics and expert support through to installation.



## Case study **NEWCASTLE FORESHORE**

As part of the City of Newcastle's revitalisation of the iconic harbourside Foreshore precinct, Atlantis partnered with the landscape architect design team to develop a bespoke concept grounded in the site's maritime heritage. This collaboration is part of a major transformation of Foreshore Park into a vibrant, inclusive destination that celebrates Newcastle's rich history.

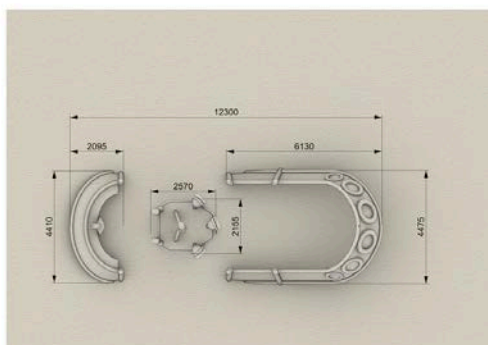


### 1 **INSPIRATION**

The concept design began with a fitting muse—the tugboat. Its strong forms, industrial aesthetic and purposeful design offered a unique starting point for sculptural water elements with personality and playability.

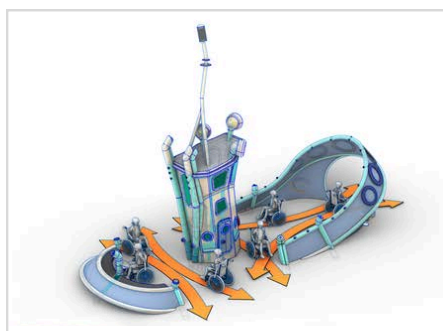
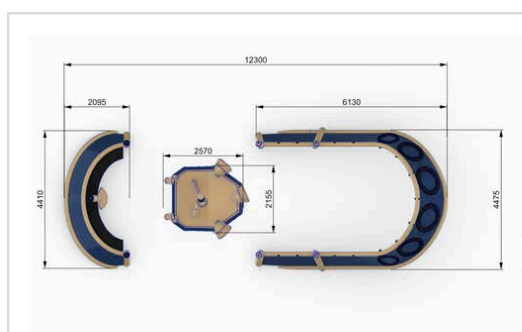
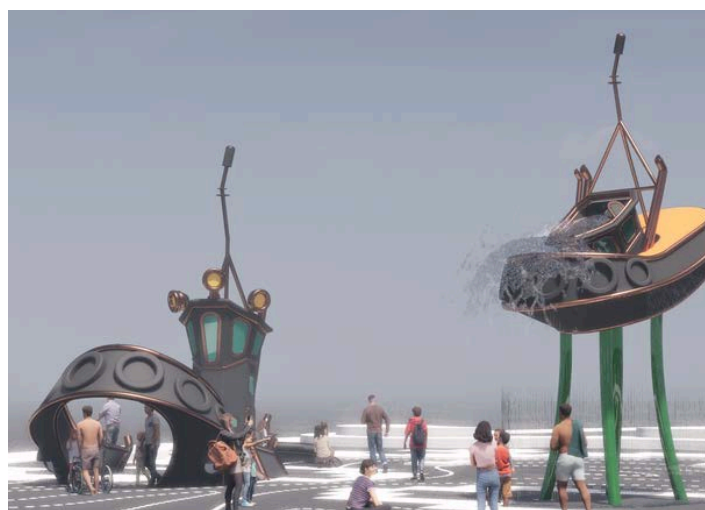
### 2 **DESIGN COLLABORATION**

In close collaboration with the landscape architect and various sub-consultants, we shaped a concept that balanced a strong visual identity with site-responsive planning. This early design phase allowed us to pressure-test key ideas through loose sketches and form studies—providing a creative yet practical sense check before progressing to detailed modelling of the bespoke elements.



### 3 BESPOKE DESIGN

The tugboat-inspired element was developed as a fully bespoke solution—designed from the ground up to suit its intended environment. Every detail was considered with intent: from scaling and proportions, structural integrity and water effects through to traffic flow, accessibility, aesthetic integration and engineering performance.



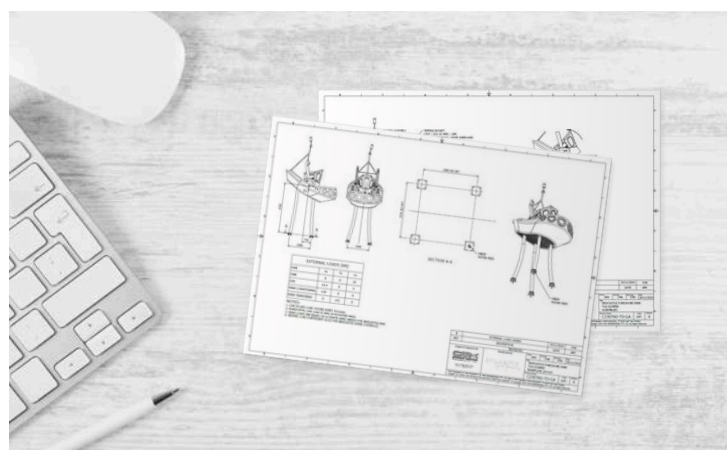
### 4 FINISHES

Colour and material selections were carefully considered to reflect the industrial heritage of the working harbour while supporting safety and durability.



### 5 SPECIFICATION

Upon approval of the concept design and finishes, a comprehensive performance specification package was provided to support the procurement process.







## 6

**CONSTRUCTION**

The design is now fully specified, with buildability and performance in mind. Structural, hydraulic and fabrication requirements have been coordinated to suit with all footing and anchoring considered and selected to ensure safe installation and long-term durability.

From here, Atlantis will manage the full construction scope—from pouring the slab and setting up the plant room, to installing the equipment and commissioning the system. Our team remains actively involved throughout implementation, providing hands-on support to ensure every element is delivered as designed.







# NEXGEN SPLASHPARKS

## SMART DESIGN, READY TO SPECIFY

We know how complex it can be to navigate funding applications and prepare detailed documentation for tender submissions only to come in over budget, or under-resourced for the tender process.

That's why we created NEXGen Splashparks—pre-designed, fully considered aquatic solutions tailored to suit a wide range of budgets, site sizes and community needs. With footprints ranging from 87m<sup>2</sup> to 400m<sup>2</sup>, NEXGen takes the guesswork out of planning, offering carefully aligned aquatic activities, age-appropriate play zones and thematic cohesion that's easy to incorporate into your broader project.

We provide:

- 2D and 3D design files ready for integration
- A Bill of Quantities for each design to assist with accurate local costings
- Performance specifications and documentation to support your tender submissions
- Guidance on community benefits and outcome statements to strengthen your funding application

Whether you're planning a small rural upgrade or delivering a large-scale regional destination, our NEXGen designs provide infrastructure solutions that are fit-for-purpose, tailored and ready to deliver impact, supported by all the information you need to secure funding and achieve the best result.



## NEXGEN - NEIGHBOURHOOD SERIES

*Smart, space-conscious design solutions.*

Perfect for smaller parks, rural settings or tight community spaces, these designs offer engaging aquatic play with a smaller footprint and a considered selection of elements.

Compact, efficient and full of value, the Community series is available in two options.



**FOOTPRINT:** Under 100m<sup>2</sup>



**IDEAL FOR:**

- Local councils
- Rural communities
- Upgrades to existing parks



**BUDGET:** Up to \$1 million



Nautilus Park (C Horse) - 87m<sup>2</sup>



Nautilus Park (Jelly) - 87m<sup>2</sup>







## NEXGEN - COMMUNITY SERIES

*Balanced designs for broader community engagement.*

These medium-sized splashparks balance variety, flow and function—ideal for suburbs, civic spaces and new developments where families gather.

Impactful, versatile and family friendly, the Neighbourhood series is available in three options.



**FOOTPRINT:** up to 250m<sup>2</sup>

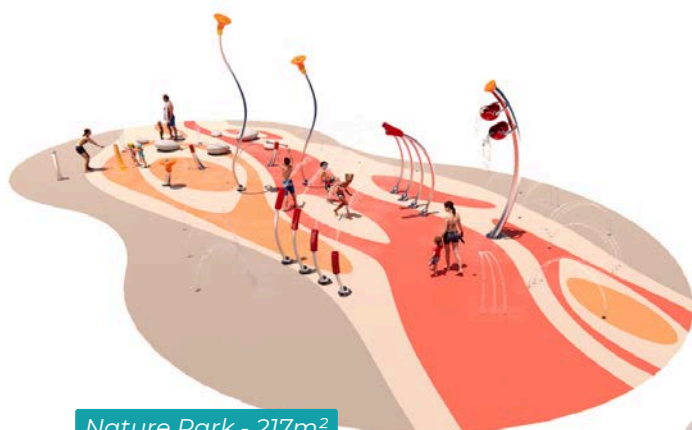


**IDEAL FOR:**

- Suburban community parks
- Town centres
- Retail precincts



**BUDGET:** \$1-1.5 million



Nature Park - 217m<sup>2</sup>



Nature Park (Dipper) - 249m<sup>2</sup>



Nature Park (Wading Pool) - 249m<sup>2</sup>





## NEXGEN - DESTINATION SERIES

*Larger-than-life aquatic landmarks.*

Designed to be the main attraction, these expansive layouts deliver multi-age play, layered activity zones and dramatic water artistry, built to support high-visitation and create lasting impressions.

Bold, memorable and built for crowds, the Destination series is available in four options.



**FOOTPRINT:** 280-400m<sup>2</sup>



**IDEAL FOR:**

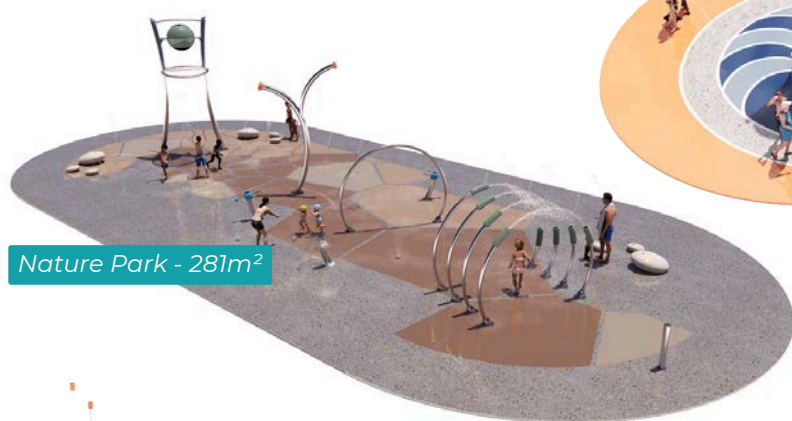
- Regional parklands
- Tourism precincts
- Masterplanned estates



**BUDGET:** \$1.5-2+ million



Nautilus Park - 326m<sup>2</sup>



Nature Park - 281m<sup>2</sup>



Pirate Park - 383m<sup>2</sup>



Industrial Park - 360m<sup>2</sup>





# AQUATIC CONSTRUCTION

When you're looking for the right project partner, it pays to work with someone who has successful delivery experience, alongside their design expertise.

The professional installation team at Atlantis Liquid Dynamics have more than 150 years' combined expertise in specialist aquatic construction, available to guide you through the complexity of delivering a successful aquatic project. We help you design and construct your hydraulic infrastructure and water sanitisation systems, aquatic slab and interface, install all above ground elements and complete the final commissioning, handover and training for you and your team.

**30+**  
AQUATIC INSTALLATIONS

**150+**  
YEARS' EXPERIENCE







# PROJECT CAPABILITY

## DESIGN TO CONSTRUCT

We understand that undertaking an aquatic construction project can be daunting; these are generally highly anticipated community projects with multiple stakeholders and a large budget, and the technicalities of the design and construction process can seem overwhelming.

With 20+ years of complex project management and installation projects under our belt, we will work with you to get the job done on time, on budget and aligned with client expectations.

We specialise in projects that others won't dare to touch; big, hard and heavy is our modus operandi. From custom tipping buckets to choreographed fountains, running kilometres of hydraulic infrastructure and constructing plant rooms, our team has the expertise to guarantee a successful project.

The following pages showcase a few of our favourite installations over the last few years; some with custom design elements, some design and construct, some working hand in glove with a principal contractor. All executed professionally and running like clockwork.





## H2OASIS @ WET'N'WILD

The client's design brief called for activities for all ages, with picnic facilities available for families who want to take some relaxing time out during the day.

The Atlantis design team conceptualised an undersea wonderland of epic proportions, where children can play among huge, sea creatures and let their imaginations run wild.

**CLIENT** VILLAGE ROADSHOW  
**DELIVERED** DECEMBER 2021

Village Roadshow CEO, Clark Kirby, said the opening of this new precinct has been an exciting time in Wet'n'Wild's history with the area already creating joy and memories for guests.

"The H2Oasis splash zone has also been welcomed as the perfect precinct for families visiting with younger guests and ideally provides something on offer for the whole family," Mr Kirby said.







## TOOGOOLAWAH SPLASHPAD

A custom splashpad design for Council that pays homage to Toogoolawah's rich history in dairy farming and namesake train station. Custom elements include a milk can dumping bucket, set along an elevated train track crossing. Other play elements included blaster cannons, water arch, Y tree and numerous inground jets.

### CLIENT

SOMERSET REGIONAL COUNCIL

### DELIVERED

JUNE 2022

## GCAC AQUATIC CENTRE



A waterpark design that is intended to deliver both an exploratory journey for younger children and a user friendly wading pool where families of all ages can cool off!

This facility attracts locals and tourists alike, with its unique design and abundance of play opportunities.

### CLIENT

ISAAC REGIONAL COUNCIL

### DELIVERED

SEPTEMBER 2022





## FLAGSTONE WATER PLAY PARK

Inspired by magical treehouses from our childhood and meeting a child's innate need to climb, fantasise, socialise and play, the design team collaborated over more than 500 design hours to create this concept.

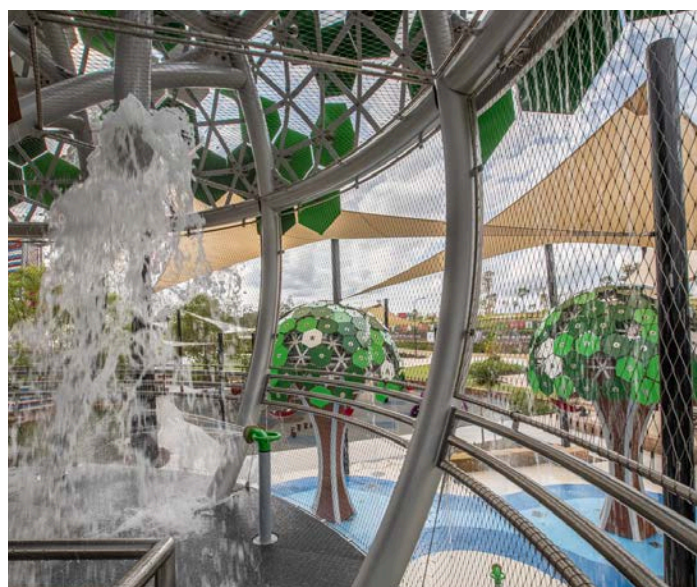
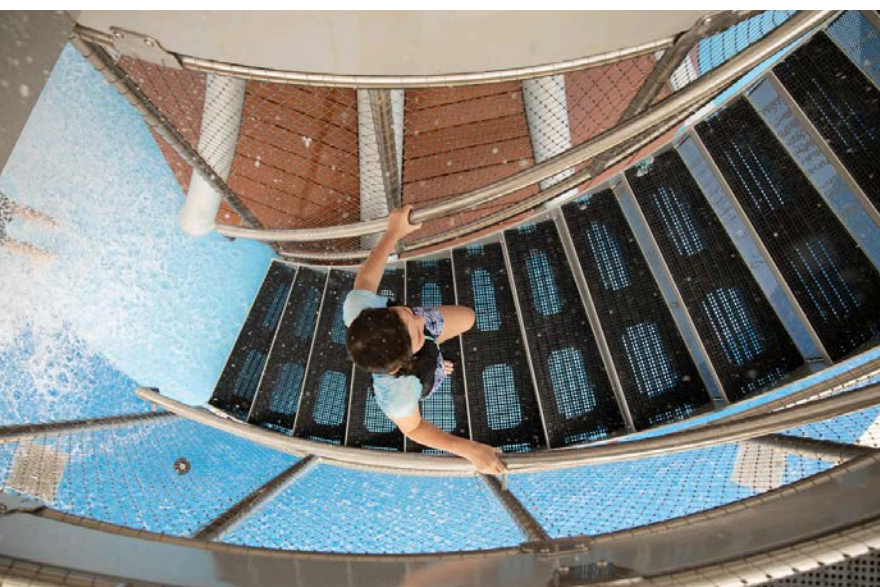
Incorporating three raintrees into a compact site, the central raintree stands at over 10m high and reaches 10m wide, overflowing with fun including two intense discharge buckets, a rainfall curtain surrounding the canopy and water cannons to encourage multi-level play.

A further two raintrees decorate the site, providing quieter opportunities for younger children with cherry inspired tipping buckets and over 20 ground sprays.

The hero feature of the raintrees are the massive geodesic domes which form the canopy of each tree; clad in hexagonal "leaves" to inspire a tree canopy cover.

**DESIGN CLIENT**  
**ASSET OWNER**  
**DELIVERED**

URBIS  
PEET LTD & LOGAN CITY COUNCIL  
DECEMBER 2019







## SEAFORTH ESPLANADE

With a shaded tidal pool and all manner of imagined sea creatures, from a towering jellyfish to crabs, starfish and a sea horse, this design was born from Council's desire to create an iconic foreshore destination for locals and tourists alike; a reason to stay and play at Seaforth.

### CLIENT

MACKAY REGIONAL COUNCIL

### DELIVERED

AUGUST 2023

## BURDEKIN AQUATIC CENTRE



Adjacent to the 50m swimming pool, the new splashpad at Burdekin Aquatic Centre features an aquatower for adventurous users, along side an all-abilities access splashpark with ground sprays, arches and duelling water blasters. A custom sugar cane tippler bucket was developed for this project, paying respect to the region's heritage.

### CLIENT

BURDEKIN SHIRE COUNCIL

### DELIVERED

DECEMBER 2022





## LOGAN GARDENS SPLASH PARK

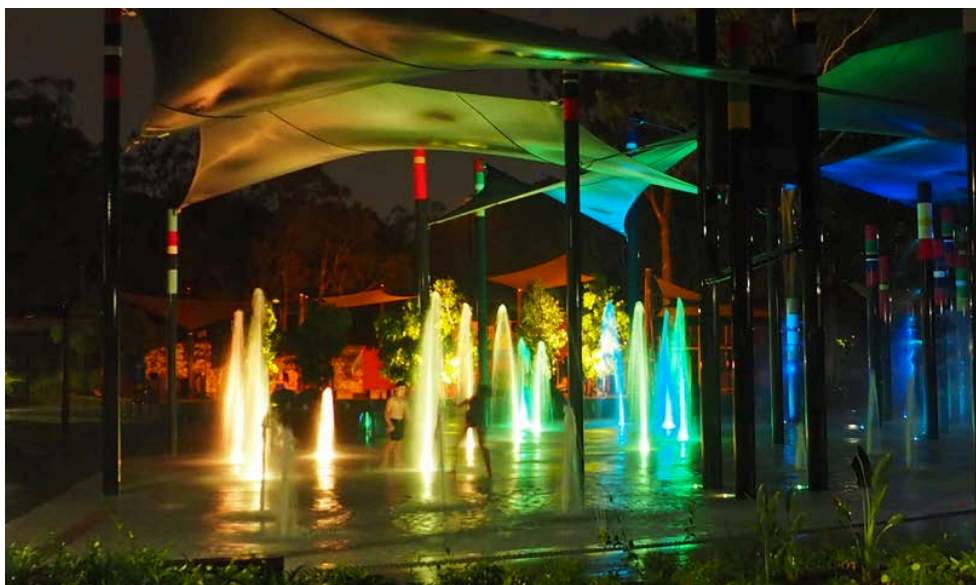
The design of this space celebrates the diversity of the local community in an eloquent piece of landscape architecture. Featuring towering totem poles and colourful patterning representing the flags of the world.

The aquatic play area evolved from a simple pop-jet plaza to incorporate a range of active and passive aqua play opportunities for users of all ages. Totem poles with sprays at various levels provides an active play area, with multiple sensory experiences from the spray mist to the textured ground and water underfoot.

A custom dumper bucket adds thrill and adventure; sporadically discharging an incredible waterfall to users eagerly waiting in anticipation below. A 50mm deep wading pool was integrated into the space with the discharge bucket to create a safe but different tactile experience; complete with low level water jets this space caters to both passive and active play.

**DESIGN CLIENT**  
**ASSET OWNER**  
**DELIVERED**

URBIS  
LOGAN CITY COUNCIL  
JANUARY 2020







## SPLASHSIDE

Maryborough is the birthplace of PL Travers, author of the beloved children's novels featuring Mary Poppins. The design of this project incorporates both aquatic and adventure play elements to create an immersive experience for users of all ages and abilities.

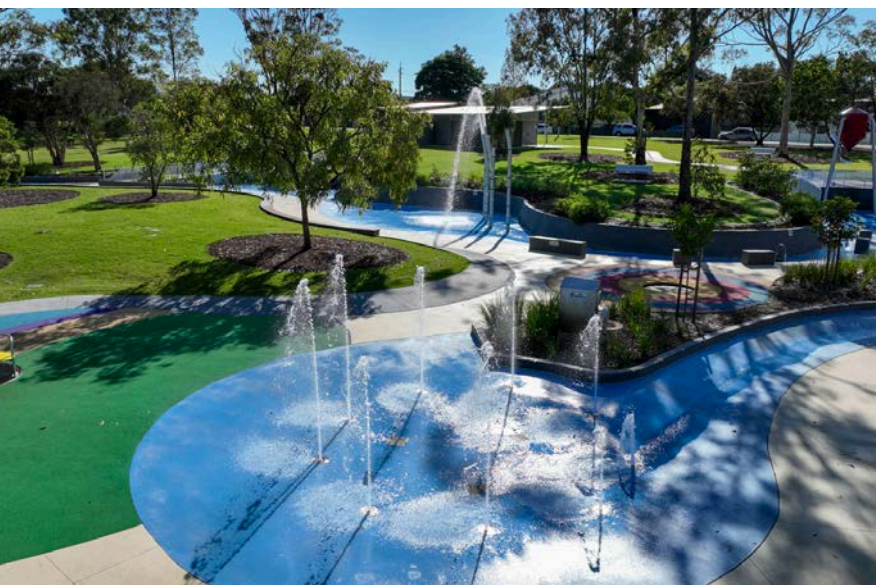
To pay homage to elements from Mary Poppin's story, the design team worked with Tract to imagine the "Spoonful of Sugar" as a custom tipping bucket, with torrent of water deflecting from the Spoon.

Rainbow pathways lead through to a central fountain plaza, with integrated LED lighting, choreographed to be an interactive feature regardless of the time. Custom designed misting towers reference the region's famous sugar cane production. A rill carries water from one activity to the next, encouraging users to explore the entire space.

**DESIGN CLIENT**  
**ASSET OWNER**

TRACT CONSULTANTS  
FRASER COAST REGIONAL  
COUNCIL  
MAY 2021

**DELIVERED**





# GETTING STARTED

## BRING YOUR VISION TO LIFE

Every community is different and so is every project we help deliver. Whether you're working with tight timeframes, specific site constraints or an ambitious design vision, we're here to support every step of the way.

From our ready-to-specify NEXGen range to fully bespoke aquatic design, we'll work with you to create a solution that balances creativity, functionality and budget—backed by the right advice at every step.

Together, let's bring your vision to life, with a space that's made to work, made to last and made to be loved.

### READY TO START A CONVERSATION?

You might be ready to specify, still shaping your ideas, or just exploring what's possible. Wherever you're at, we'd love to hear about your project. Reach out to discuss next steps, request documentation or talk through the best-fit solution for your site.

Speak with Shane Vardy, Aquatics Specialist

📞 0418 776 251

✉️ [svardy@atlantisld.com.au](mailto:svardy@atlantisld.com.au)







ATLANTIS  
*liquid dynamics*

## CONTACT



[hello@atlantisld.com.au](mailto:hello@atlantisld.com.au)



07 5301 9292



601 Boundary Rd, Richlands QLD 4077



[atlantisliquidynamics.com.au](http://atlantisliquidynamics.com.au)